

FLODA

(EN) INSTALATION AND SAFETY MANUAL

Before you proceed, make sure you have:

voltage tester,

pliers, insulation peelers,

screwdriver,

screws and plugs,

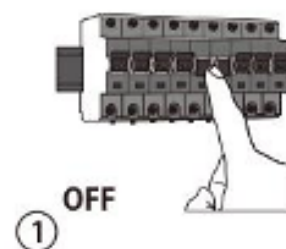
impact driver,

hammer drill.



Step 1. Turn off the fuses

Before proceeding with the installation, first turn off the fuse responsible for the wire in question and, for safety reasons, check again with a tester that current is not flowing at the phase conductors.

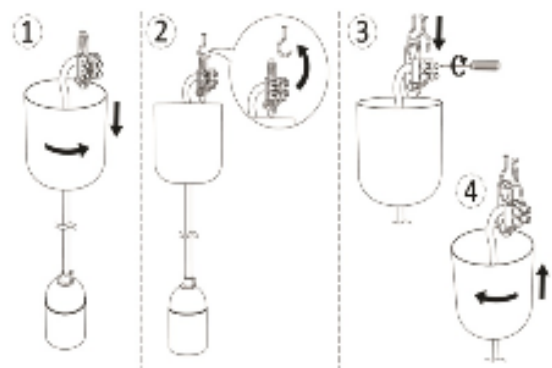


Step 2. Marking the mounting holes

Place the headliner against the ceiling and use a pencil to mark the location(s) where you will need to drill the hole(s). Some lamps will need a hook for mounting. This is not included in the kit. However, you can purchase one at any hardware store. For large headliners mounted at two or more points, use a pencil to draw lines on the ceiling surface that are the length of the mounting hole spacing. At the ends of the marked lines you can measure to the wall to check for parallelism. Measure the hole spacing and transfer it to the resulting line. Drill anchor holes at the marked locations and insert the anchors.

Step 3. Connect the wires to the hanging lamp

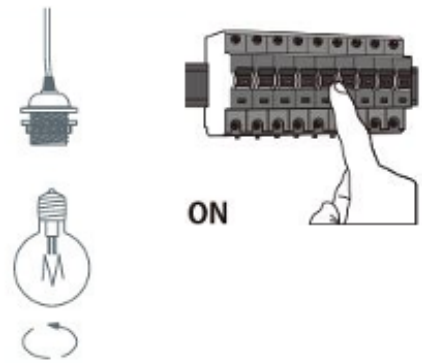
The next step is to connect the wires using an electrical cube. The electrical cube is a small plastic piece that is used to connect 2 electrical wires. The electrical cube has 2 or 3 holes for the wires. There will certainly be a place for phase wire = L (black or brown), neutral wire = N (blue). Sometimes there is also a hole for the protective conductor = PE (green/yellow). After inserting the wires into the electrical cube, tighten the screws with a screwdriver or, in the case of Vago connectors, insert the wire ends into the electrical cube. Hook-mounted headliners have a plastic, three-hole bracket to route the wire and hang it on the hook.



If the lamp is equipped with a steel cord, the cord attaches to the hook. Excess cord can be placed in the headliner.

Step 5. Screw in the bulb

Once all the wires are connected, you can turn the fuse back on and check whether that the lamp is working properly, but before you do that, you need to screw in the bulb. Often the light source is not supplied. Suitable light sources are available on our website. Now all that remains is to enjoy your new purchase! Floga lamps power all types of LED bulbs such as E-27, E-14 or GU-10. In the case of Edison bulbs, please follow the rule: E-27 max 60 Watts E-14 max 40 Watts



If you have any questions, please contact our Customer Service Department. Customer Service is available Monday through Friday from 10:00 am to 6:00 pm.

Contact us:

Email:
info@floga.eu

Phone number:
+ 48 535 323 311
+ 48 663 867 465

Working hours:

Monday - Friday: 10:00 - 18:00
Saturday and Sunday: Closed